



# Printing UL Marks

---

## 1-0 Guide for printing UL certification Marks

This guide explains the requirements of Underwriters Laboratories (UL) as they relate to the printing of its registered certification Mark, hereinafter referred to as the UL Mark. It further assists UL authorized label suppliers (printers) who reproduce the Mark by helping them understand their obligations.

---

## 2-0 Authorized Supplier's Agreement (L-10)

Before a supplier may reproduce the UL Mark, they must properly execute the "Agreement with Supplier of Listing Marks, Classification Markings, and Recognized Component Marks." This agreement between the supplier and UL establishes the legal obligations of the supplier of UL's ownership, control of the printing and use of the UL name. The execution of the Agreement does not in itself constitute permission to manufacture any Marks. Rather, it is a recognition that the Marks are only to be manufactured when and as authorized by UL. Once the Agreement is properly executed, the supplier becomes authorized by UL and is eligible to reproduce the Mark. The supplier's name will be added to UL's Published Directories and will be accessible via the UL website at <http://www.ul.com/marks>

To verify adherence to the Agreement and other documents provided by UL, UL reserves the right to have free, unannounced and immediate access to such facilities during normal business hours – or when the supplier's facilities are in operation – to examine all records of the label printer relating to the printing, manufacture, delivery, shipment or distribution of UL Marks. A copy of the signed and executed agreement shall be kept by the supplier and be made available upon demand during the periodic audit visits from the UL representative.

## 3-0 The Certification Mark

Upon successful investigation of a product submittal UL authorizes the manufacturer to apply the UL Mark on products as the manufacturer's declaration that the product was manufactured in accordance with the requirements of UL. This authorization applies only to those products that comply with the UL requirements and only at manufacturing facilities authorized by UL. Production is audited by UL representatives to confirm that products bearing the UL Mark continue to meet UL requirements.

The presence of the UL Mark on the product is the only means provided to identify products manufactured under a UL Follow-Up Service Program. This Mark, which can appear in several different forms or abbreviations is registered with the United States Patent and Trademark Office, and is also registered in many other countries. The different styles of the Mark can be associated with the types of investigations performed on products and the type of Follow-Up Service Inspection Program performed at the manufacturing facilities. Prior to reproduction, the final layout of the Mark must first be provided to UL for review and acceptance. Only if the layout is acceptable to UL will the Mark be authorized for reproduction.

Following are examples of the Mark. Downloadable versions of the Mark along with the proper proportions of the elements that comprise the Mark can be obtained at UL's Web site at <http://www.ul.com/marks>.



Symbol for the United States	Symbol for Canada	Symbol for the United States and Canada
------------------------------	-------------------	---



**GAS-FIRED**



**GAS-FIRED**



**GAS-FIRED**



**SECURITY**



**SECURITY**



**SECURITY**





Symbol for the United States	Symbol for Canada	Symbol for the United States and Canada
------------------------------	-------------------	---

**SIGNALING**



**LISTED**

**SECURITY  
SIGNALING**



**LISTED**



**SIGNALING**



**LISTED**

**SECURITY  
SIGNALING**



**LISTED**



**SIGNALING**



**LISTED**

**SECURITY  
SIGNALING**



**LISTED**

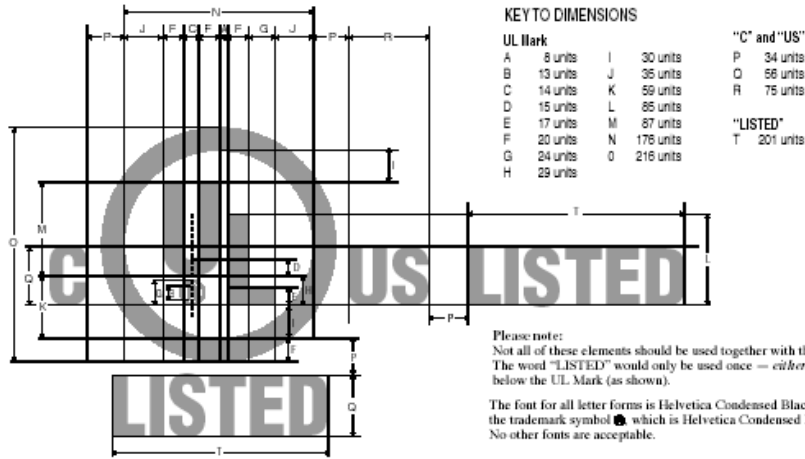


**VERIFIED**

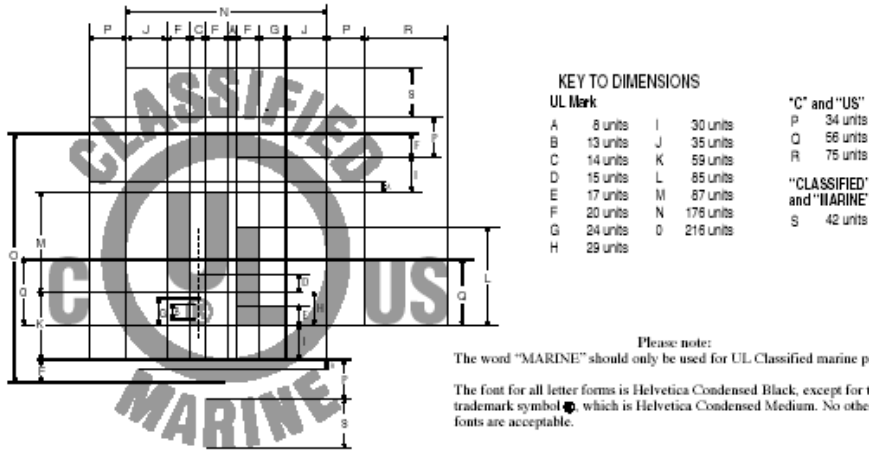




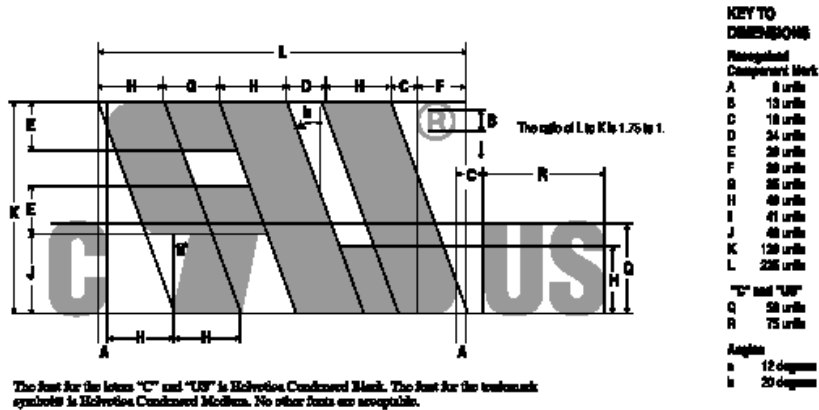
**RELATIVE DESIGN & PROPORTIONS OF THE UL LISTING MARK FOR CANADA AND THE U.S.**



**RELATIVE DESIGN & PROPORTIONS OF THE UL CLASSIFICATION MARK FOR CANADA AND THE UNITED STATES**



**RELATIVE DESIGN & PROPORTIONS OF THE RECOGNIZED COMPONENT MARKS**





#### **4-0 Types of Follow-Up Service**

There are two types of Follow-Up Service: Type L and Type R. For each type of service, there is a different method of authorization provided by UL to reproduce the Mark. Under Type L Service UL will provide formal authorization with each label order. This will be in the form of an “Authorization to Manufacture UL Marks”. This document will include the quantity of labels to be printed, the serial or issue numbers to be printed on the labels and the location where the labels are to be shipped. Suppliers must not reproduce any UL Marks unless they receive this authorization. Under Type R Service suppliers will receive from the manufacturer or from UL authorization in the form of a label layout that has been stamped, signed and dated by a representative of UL’s Label Center. As an alternative the end-use manufacturer may provide a copy of the UL Mark description contained on a Listing Mark Data Page or Classification Marking Data Page from his UL Procedure. Either of these documents is the supplier’s authorization to reproduce the UL Mark. The quantities and location where the labels are to be shipped will be provided by the end-use manufacturer. The supplier must not reproduce any Type R Marks unless this stamped drawing or a copy of the manufacturers Listing Mark Data Page or Classification Marking Data Page is provided.

#### **4-1 Suppliers Records**

Suppliers shall retain all records pertaining to orders of UL Marks for a minimum of two years. These records shall be accessible during the periodic audit visits conducted by a representative of UL. For additional information, please visit our UL Marks information page at <http://www.ul.com/marks>

#### **4-2 Printing of UL Marks on Holographic Material**

For certain types of products, UL requires the UL Mark to appear on special holographic substrate material. To control the flow of holographic labels, UL only works with one source for the printing UL Marks on this holographic material. No other printing sources will be considered. The product categories that requires the use of this special holographic substrate material can be found at: <http://www.ul.com/marks>

To avoid confusion with legitimate UL hologram labels UL Marks shall not be printed on any type or style of holographic substrate material, except as noted above. .

#### **4-3 Label Materials and Permanence of Marking Requirements**

Labels that bear the UL Mark are not subject to specific label material, ink or durability requirements, ( except as noted in section 4-1) or if the UL Mark appears on the same label as other markings described in the Follow-Up Service Procedure and those markings are required to appear on a label made from a specific material, ink or meet specific durability requirements. To determine if the UL Mark or other additional information provided on the label must comply with these requirements, manufacturers must reference the Follow-Up Service Procedure covering their product and the Standard against which their product is evaluated or contact their UL project engineer for guidance. Label printers interested in determining a customer's label requirements should request that information from the manufacturer. Additional information about Permanence of Marking requirements is available at [www.ul.com/labels](http://www.ul.com/labels).



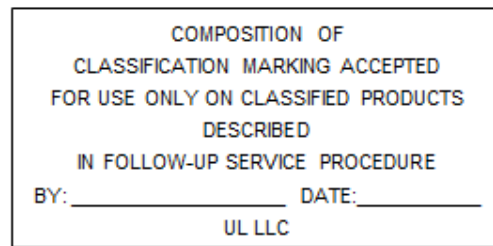
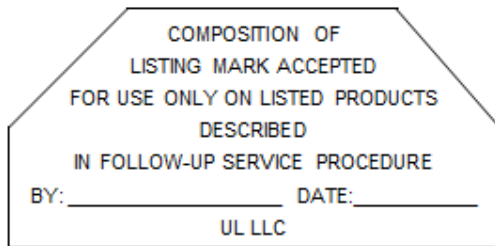
The evidence of UL certification is the UL Mark on the product, if the UL Mark should come off, then that product is no longer considered UL certified. Therefore, the manufacturer should exercise caution in selecting a label material and ink to mitigate any risk associated with loss of UL certification.

#### 4-4 Type R Marks

Manufacturers of UL certified products are required to submit a sample layout of the proposed Mark to UL for review and authorization. If the design layout is found acceptable, UL will authorize the layout by applying its authorization stamp. The stamped layout will be signed and dated by a representative of UL and then returned to the manufacturer. The manufacturer may then reproduce the Mark in his factory or present the stamped layout to an authorized supplier for reproduction. Once the supplier receives a copy of the stamped layout, the supplier may reproduce the Mark in quantities specified by the manufacturer and ship them directly to the manufacturer. In cases where the client does not provide the supplier with a copy the UL stamped layout, the supplier may submit the UL mark layout directly to a UL Label Center for review. Future orders for Type R Marks may be printed by the authorized supplier and shipped directly to the manufacturer as long as they are reproduced to the specifications of the original stamped UL design layout.

In lieu of the stamped UL Mark layout, the manufacturer may provide a copy UL's Listing Mark Data Page or Classification Marking Data Page. This is a page that UL provides to the manufacturer and has the required elements of the UL Mark. The supplier is to ensure that UL Marks are printed in accordance with the elements required in the Mark Data Page.

Examples of the stamp used by UL to authorize the layout are shown below:






Examples of a Listing Mark Data Page or Classification Marking Data Page are shown below:

File E123456 Vol. 1 NWGQ Page 1 Issued: 2007-11-29  
Listing Mark Data Page

(FILE IMMEDIATELY AFTER AUTHORIZATION PAGE)

LISTING MARK

The Listing Mark consists of four elements placed in close proximity and shall appear on Listed products only. Minimum size is not specified, as long as the Listing Mark is legible. The following is suggested.



XXXX = The control number assigned by UL, 1234 or Applicant/Listing's File Number.

The minimum height of the registered trademark symbol ® shall be 3/64 of an inch. When the overall diameter of the UL Mark is less than 3/8 of an inch, the trademark symbol may be omitted if it is not legible to the naked eye.

The product identity is: "UL 1950," "UL 60950," "UL 60950-1," "INFORMATION TECHNOLOGY EQUIPMENT," "NWGQ," "I.T.E.," OR "INFO. TECH. EQUIP.," and may also include one of the following product names: "COPIER," "MODEM," "PAPER SHREDDER," "PERSONAL COMPUTER," "CORDLESS TELEPHONE," or other appropriate product name as shown in the individual Listings.

The category identifier for field-installed accessories is provided with the additional word "ACCESSORY."

The product identity may appear elsewhere on the product when the other three elements are directly and permanently applied to the product by stamping, molding, ink-stamping, silk screening or similar process or part of the nameplate which includes the rating or the catalog or model designation.

The complete four-element Listing Mark may appear on the smallest unit container in which the product is packaged when the product is of such a size that only the UL Symbol can be stamped, cast or molded into the product.

Separable Listing Mark (not part of a nameplate and in the form of decals, stickers or labels) will always include the four elements.

The manufacturer may reproduce the Mark or obtain it from a UL authorized supplier. The list of UL authorized label suppliers can be found on UL's online directory at [www.ul.com](http://www.ul.com).

THIS FORM PAGE IS TO BE REVISED BY THE NORTHBROOK LABEL DEPARTMENT ONLY

File R123 Vol. 1 AJZV Page 1 Issued: 2009-12-03  
Classification Mark Data Page

(FILE IMMEDIATELY AFTER AUTHORIZATION PAGE)

CLASSIFICATION MARK


COMPOSITION AND ELEMENT

The Classification Mark shall consist of the following and shall appear on the product or on the container in which the product is packaged.

AIR FILTER UNIT  
AS TO FLAMMABILITY ONLY  
123A

MARKING

The following symbol shall be located adjacent to or in close proximity to the regular Classification Mark as shown above.



The minimum height of the registered trademark symbol ® shall be 3/64 of an inch. When the overall diameter of the UL Mark is less than 3/8 of an inch, the trademark symbol may be omitted if it is not legible to the naked eye.

PROCUREMENT

The manufacturer may reproduce the Mark or obtain it from a UL authorized supplier. The list of UL authorized label suppliers can be found on UL's online directory at [www.ul.com](http://www.ul.com).

The Type R UL Mark normally consists of the following elements:

- Appropriate UL symbol, LISTED or CLASSIFIED (if CLASSIFIED is used, it appears in an arc on top of the UL symbol)
- Product name
- A four character alphanumeric Control Number assigned by UL.

In addition to the above, the manufacturer may include other information along with the Type UL R Mark including company name, electrical ratings, warning markings, date codes, place of manufacture, etc. However, none of this other information should interfere with the required elements of the Mark as authorized by UL on the stamped drawing or as shown on the Listing Mark Data Page or Classification Marking Data Page.



#### 4-5 Type L Marks

Each order of Type L Marks requires specific written authorization from UL in the form of “Authorization to Manufacture UL Marks”. This authorization is issued by a UL Label Center and sent directly to the supplier with a copy sent to the manufacturer of the UL certified product who placed the order for the UL Marks.

The authorization will include the name of the supplier, the Serial or Issue numbers that are to appear on the Marks, the type of UL symbol, appropriate wording, and the specific quantity of Marks that are to be produced. The Marks may only be produced as authorized and only in the quantities specified by UL on the order authorization. UL may also specify the label material, packaging and shipping instructions. In addition, the supplier must comply with the general “Terms and Conditions” that appear as part of each UL authorization to reproduce Type L Marks.

The Type L Mark normally consists of the following elements:

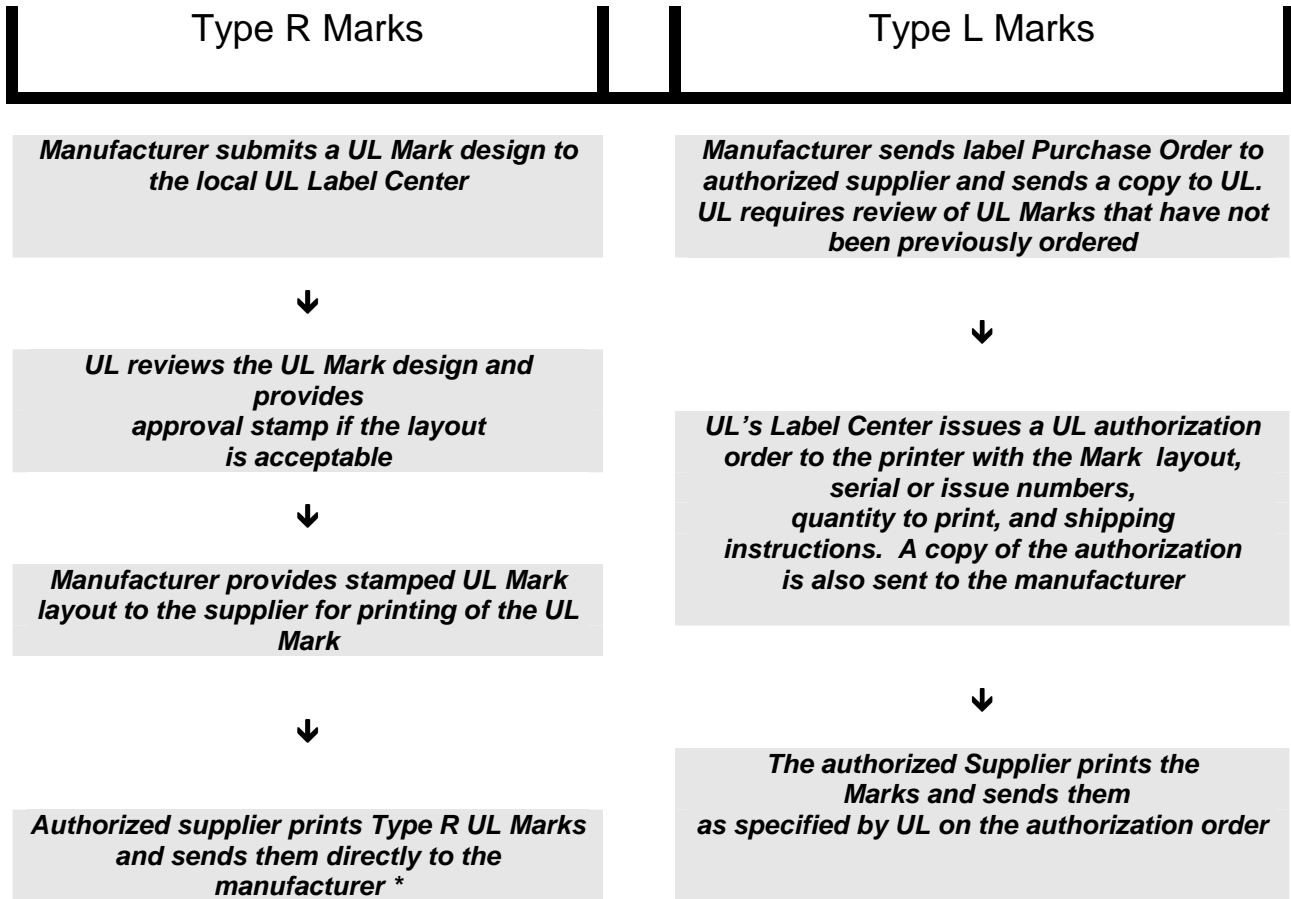
- Appropriate UL symbol, LISTED, CLASSIFIED (if CLASSIFIED is used, it appears in an arc on top of the UL symbol) or Recognized Component
- Product name
- The words “ISSUE NO.” or “SERIAL NO.” followed by the numbers appearing on the authorization order from UL
- UL Listee Company name or UL File Number.

In addition to the above, the manufacturer may include other information along with the Type L Mark including electrical ratings, warning markings, date codes, place of manufacture, etc.

Type L Marks will be shipped as directed on the authorization order. As an added level of control, the UL field representative assigned to the manufacturer’s facility will review the Marks and quantity of Marks received by the manufacturer.



#### 4-6 Flow Chart for Ordering Type R and Type L Marks



Note: Future orders may be placed directly to the supplier as long as the composition of the UL Mark elements do not change from the UL authorized stamped drawing.

Note: Due to the changing issue/serial numbers that are controlled by UL, each order for Type L Marks must be authorized by a UL Label Center



## 5-0 UL Label Centers

Underwriters Laboratories Inc. has full-service Label Centers worldwide. These Label Centers can review and authorize design layouts for Type R Marks and can process manufacturers' Purchase Orders for Marks under Type L Service. In addition, they authorize the supplier to reproduce individual orders of the Mark.

To Locate the UL Label Center closest to you please visit UL's website at <http://www.ul.com/marks> or contact a Customer Service Professional at the UL office in your area.

UL and the UL logo are registered trademarks of UL© 2012